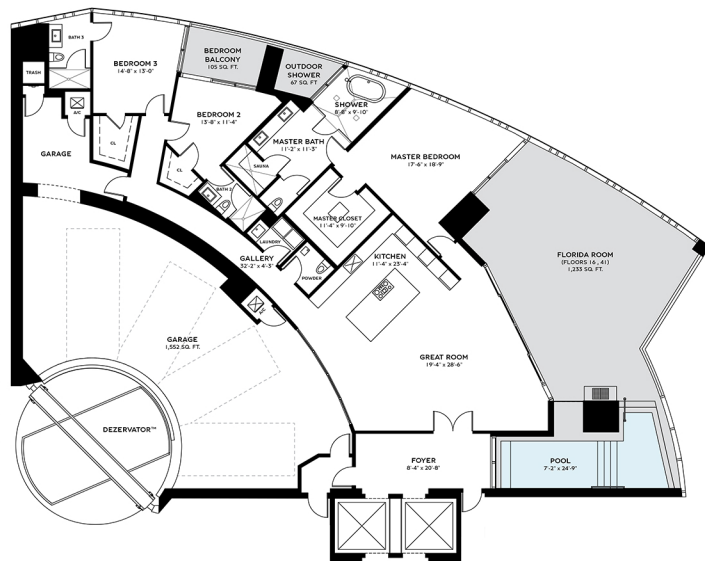


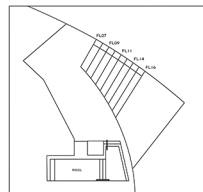
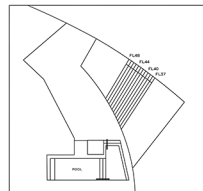


BENTLEY
RESIDENCES

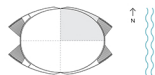


RESIDENCE ARNAGE
3 BEDS | 3.5 BATHS
FLOORS 16, 41

INTERIOR	3,014 SQ. FT.	919 SQ. M.
BALCONY	1,405 SQ. FT.	428 SQ. M.
GARAGE	1,552 SQ. FT.	473 SQ. M.
TOTAL	5,971 SQ. FT.	1,820 SQ. M.



TERRACE AREA VARIES BY FLOOR



DEZER

ORAL REPRESENTATIONS CANNOT BE RELIED UPON AS CORRECTLY STATING THE REPRESENTATIONS OF THE DEVELOPER. FOR CORRECT REPRESENTATIONS, PLEASE REFERENCE TO THIS BROCHURE AND TO THE DOCUMENTS REQUIRED BY SECTION 718(5), FLORIDA STATUTES, TO BE FURNISHED BY A DEVELOPER TO A BUYER OR LESSEE.
 Small square footages and dimensions are provided to the best knowledge of the owner, with the exception of areas shown, drawing walls and in-line areas from the square footage and dimensions that would be determined by the manufacturer and supplier of the "unit" and from the manufacturer's literature. Small square footages only include the exterior areas between exterior walls and include all interior structural components and other common elements. This brochure is generally used to solicit interest and to provide a preliminary floor to compare the floor with units in other construction projects that utilize the same model. Measurements of rooms on this floor plan are given in the general points of each given room (i.e. if the room were a perfect rectangle, without regard for any columns or columns). Accordingly, the area of the actual room will typically be smaller than the product

obtained by multiplying the stated length and width. All dimensions are approximate which will vary with actual construction, and all floor plans, specifications and other development plans are subject to change and will not necessarily precisely reflect the final plans and specifications for the development. All dimensions of appliances, counters, toilets, floor coverings and other matters of detail, including, without limitation, items of finish and decorative, are conceptual only and are not necessarily included in each Unit.