

SOLE 401

3 BEDROOMS | 3.5 BATHROOMS

INTERIOR	2,503 SQ. FT.	23254 SQ. MTS.
EXTERIOR	743 SQ. FT.	6903 SQ. MTS.
TOTAL	3,246 SQ. FT.	30156 SQ. MTS.



VITA

AT GROVE ISLE

WATERFRONT RESIDENCES



3. DIMENSIONS ARE MEASURED TO THE EXTERIOR BOUNDARIES OF THE EXTERIOR WALLS AND THE CENTERLINE OF INTERIOR PARTITION WALLS AND SLAB. VARY FROM THE DIMENSIONS THAT WOULD BE OBTAINED BY VISUALLY INSPECTING THE EXTERIOR AND INTERIOR OF THE UNIT. DIMENSIONS IN THE EXTERIOR VIEW ONLY INCLUDE THE HEIGHT RANGES BETWEEN THE FLOOR FINISHES AND THE FINISHES OF THE WALLS AND CEILING. HEIGHTS OF ROOMS AND CEILING HEIGHTS ARE NOT SHOWN. THE AREA OF THE UNIT IS CLASSIFIED AS RESIDENTIAL. THERE ARE NO UNIT BOUNDARIES. IS DESCRIBED ON ASH-114 TO THE OCCUPANT. NOTE THAT MEASUREMENTS OF ROOMS SET FORTH ON THIS FLOOR PLAN ARE GENERALLY TAKEN AT THE GREATEST POINTS OF EACH OVERLAP ROOMS IF THE ROOM WERE A PERFECT RECTANGLE WITHOUT INTRUSION FOR AIR CONDITIONING, HORIZONTALS, THE AREA OF THE ACTUAL ROOM WILL TYPICALLY BE SMALLER THAN THE ROOMS SET FORTH ON THIS FLOOR PLAN. ALL DIMENSIONS ARE APPROXIMATE AND MAY VARY SLIGHTLY. ALL DIMENSIONS ARE APPROXIMATE AND MAY VARY SLIGHTLY. ALL DIMENSIONS ARE APPROXIMATE AND MAY VARY SLIGHTLY.

SOLE 401

3 BEDROOMS | 3.5 BATHROOMS

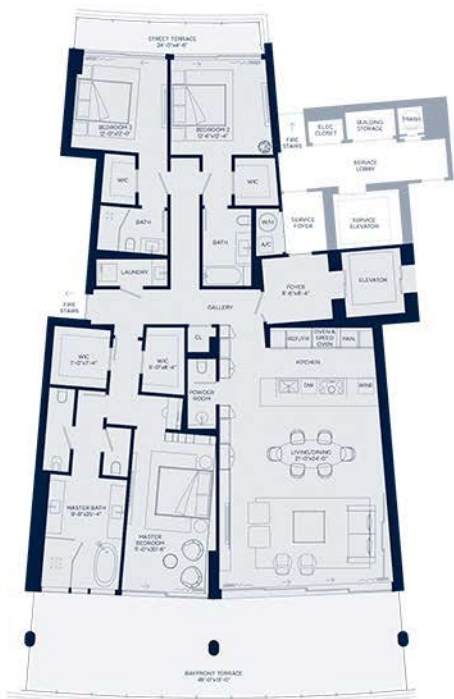
INTERIOR	2,503 SQ. FT.	23254 SQ. MTS.
EXTERIOR	743 SQ. FT.	6903 SQ. MTS.
TOTAL	3,246 SQ. FT.	30156 SQ. MTS.



VITA

AT GROVE ISLE

WATERFRONT RESIDENCES



3. DIMENSIONS ARE MEASURED TO THE EXTERIOR BOUNDARIES OF THE EXTERIOR WALLS AND TO THE CENTERLINE OF INTERIOR DIVIDING WALLS AND SLAB. VARY FROM THE DIMENSIONS THAT WOULD BE DETERMINED BY USING THE DESCRIPTION AND LOCATION OF THE UNIT SET FORTH IN THE EXCLUSIVE PLAN. DIMENSIONS ONLY INCLUDE THE NET GROSS FINISHED FLOOR AREA BETWEEN THE FINISHED WALLS AND EXCLUDES ALL BUILT-IN STRUCTURAL COMPONENTS. FLOOR HEIGHTS: THE AREA OF THE UNIT DECLARED IN ACCORDANCE WITH THESE SKETCHES AND DIMENSIONS IS DESCRIBED ON ASHRAE 9 TO THE OCCUPATION. NOTE THAT MEASUREMENTS OF ROOMS SET FORTH ON THIS FLOOR PLAN ARE GENERALLY TAKEN AT THE GREATEST POINTS OF LEAD OVER A ROOM AS IF THE ROOM WERE A PERFECT RECTANGLE WITHOUT REGARD FOR ANY CORNERS, RECESSES OR THE AREA OF THE ARCHES. ROOMS WILL TYPICALLY BE SMALLER THAN THE PRODUCT OFFERED BY THE BRANDS LISTED. ALL DIMENSIONS ARE APPROXIMATE AND MAY VARY SLIGHTLY. ALL DIMENSIONS MUST BE CONFIRMED BY THE ARCHITECT'S PLANS AND SPECIFICATIONS. DIMENSIONS ARE APPROXIMATE AND MAY VARY SLIGHTLY.