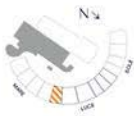


LUCE 401

3 BEDROOMS + DEN | 3.5 BATHROOMS

| | | |
|----------|---------------|-----------------|
| INTERIOR | 3,105 SQ. FT. | 285.29 SQ. MTS. |
| EXTERIOR | 914 SQ. FT. | 84.91 SQ. MTS. |
| TOTAL | 4,017 SQ. FT. | 373.19 SQ. MTS. |



VITA

AT GROVE ISLE

WATERFRONT RESIDENCES



3. DIMENSIONS ARE MEASURED TO THE EXTERIOR BOUNDARIES OF THE EXTERIOR WALLS AND THE CENTERLINE OF INTERIOR PARTITION WALLS AND DO NOT VARY FROM THE DIMENSIONS THAT SHOULD BE DETERMINED BY USING THE DESCRIPTION AND DRAWINGS OF THE UNIT. SEE FLOOR IN THE EXHIBIT FOR DIMENSIONS. DIMENSIONS ONLY INCLUDE THE MEASURED DISTANCE BETWEEN THE PERIMETER WALLS AND EXCLUDES ALL ROOM STRUCTURAL COMPONENTS, FLOOR FINISHES, AND AREA OF THE UNIT OCCUPIED BY APPLIANCES, FIXTURES, SKYLIGHTS, BENCHES, ETC. DIMENSIONS ON ARCHITECTURAL PLANS ARE GENERALLY TAKEN AT THE GREATEST POINTS OF EACH OVERLAP AREA. IF THE ROOM HAS A PERFECT RECTANGULAR SHAPED, MEASURE FOR MAXIMUM DIMENSIONS. THE AREA OF THE ROOM, HOWEVER, WILL TYPICALLY BE SMALLER THAN THE PRODUCT OBTAINED BY MULTIPLYING THE STRAIGHT LENGTH TIMES WIDTH. ALL DIMENSIONS ARE APPROXIMATE AND MAY VARY SLIGHTLY. DIMENSIONS AND ALL OTHER PLANS AND DEVELOPMENT PLANS ARE SUBJECT TO CHANGE.

LUCE 401

3 BEDROOMS + DEN | 3.5 BATHROOMS

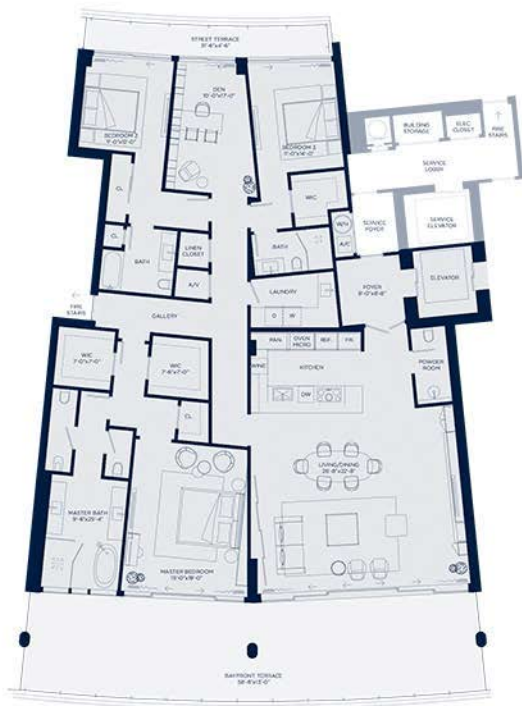
| | | |
|----------|---------------|-----------------|
| INTERIOR | 3,103 SQ. FT. | 285.29 SQ. MTS. |
| EXTERIOR | 914 SQ. FT. | 84.91 SQ. MTS. |
| TOTAL | 4,017 SQ. FT. | 373.19 SQ. MTS. |



VITA

AT GROVE ISLE

WATERFRONT RESIDENCES



3. DIMENSIONS ARE MEASURED TO THE EXTERIOR BOUNDARIES OF THE EXTERIOR WALLS AND, FOR CERTAINING OF INTERIOR DIMENSIONS, WALLS AND SLABS, FROM THE DIMENSIONS THAT SHOULD BE DETERMINED BY USING THE DESCRIPTION AND DRAWINGS OF THE UNIT. SEE PLAN IN THE EXHIBIT FOR MORE INFORMATION. DIMENSIONS INDICATED BETWEEN THE FURNITURE WALLS ARE SUBJECT TO THE FINISHES, INCLUDING THE FLOOR FINISHES. THE AREA OF THE UNIT IS CLARIFIED IN ACCORDANCE WITH THE 2015 INTERNATIONAL BUILDING CODES, AS DESCRIBED ON 45-104.1 TO THE OCCUPANCY CODE. NOTE THAT MEASUREMENTS OF ROOMS SET FORTH ON THIS FLOOR PLAN ARE GENERALLY TAKEN AT THE CENTER OF POINTS OF LOAD (OVER A ROOM AS IF THE ROOM WALLS PERFECTLY METHALL) WITHOUT ADJUSTMENT FOR WALL THICKNESS. THE AREA OF THE KITCHEN ISOMETRICALLY REPRESENTED BY THIS PRODUCT DEFINED BY MEASURING THE STOVE LENGTH TIMES WIDTH. ALL DIMENSIONS ARE APPROXIMATE AND MAY VARY SLIGHTLY. DIMENSIONS AND ALL FLOOR PLANS AND DEVELOPMENT PLANS ARE SUBJECT TO CHANGE.