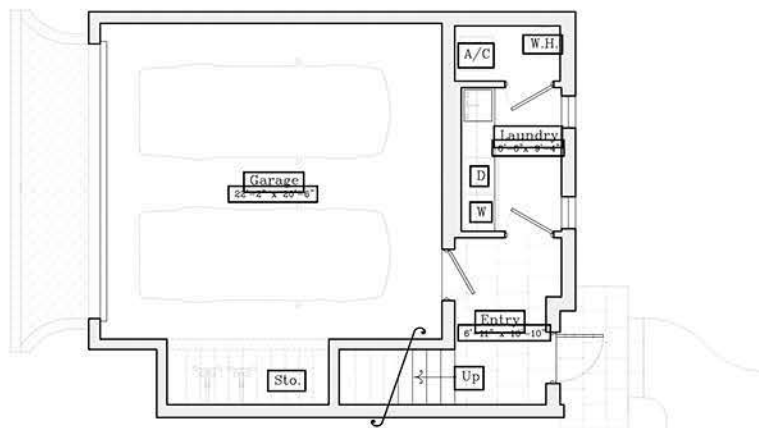
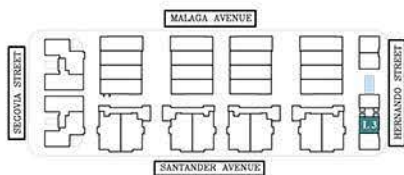




THE VILLAGE  
AT CORAL GABLES



LOFTS



L3  
First Floor

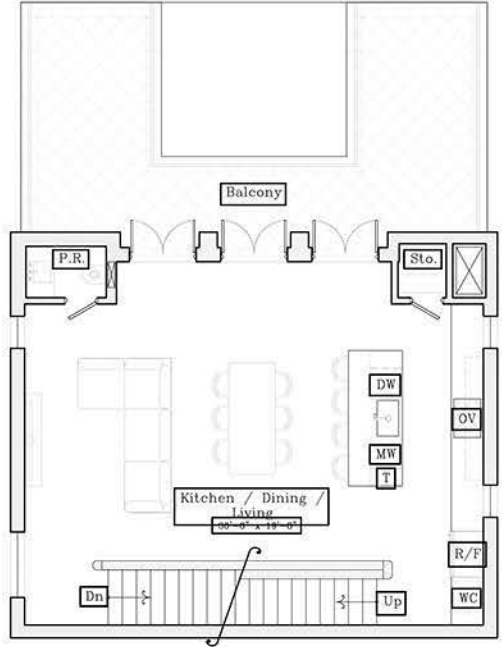
|                  |          |
|------------------|----------|
| AC INTERIOR AREA | 1,881 SF |
| BALCONY          | 346 SF   |
| GARAGE           | 542 SF   |

|                 |                 |
|-----------------|-----------------|
| TOTAL RESIDENCE | <b>2,769 SF</b> |
| ADJUSTED AREA   | 2,152 SF        |

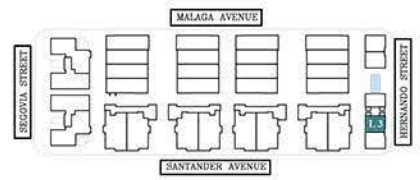




THE VILLAGE  
AT CORAL GABLES



LOFTS



L3  
Second Floor

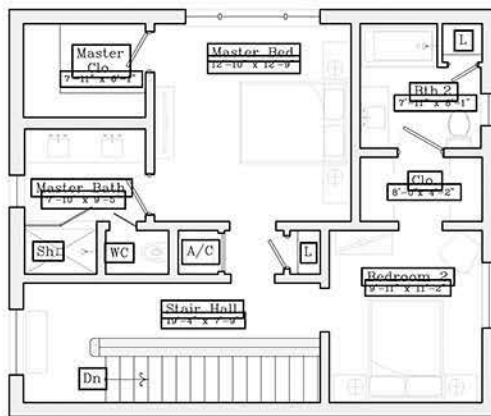
|                  |          |
|------------------|----------|
| AC INTERIOR AREA | 1,881 SF |
| BALCONY          | 346 SF   |
| GARAGE           | 542 SF   |

|                 |          |
|-----------------|----------|
| TOTAL RESIDENCE | 2,769 SF |
| ADJUSTED AREA   | 2,152 SF |

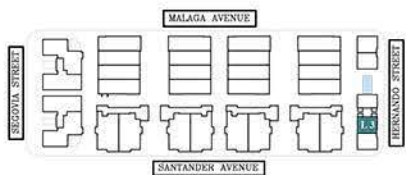




THE VILLAGE  
AT CORAL GABLES



LOFTS



L3  
Third Floor

|                  |          |
|------------------|----------|
| AC INTERIOR AREA | 1,881 SF |
| BALCONY          | 346 SF   |
| GARAGE           | 542 SF   |

|                 |          |
|-----------------|----------|
| TOTAL RESIDENCE | 2,769 SF |
| ADJUSTED AREA   | 2,152 SF |

