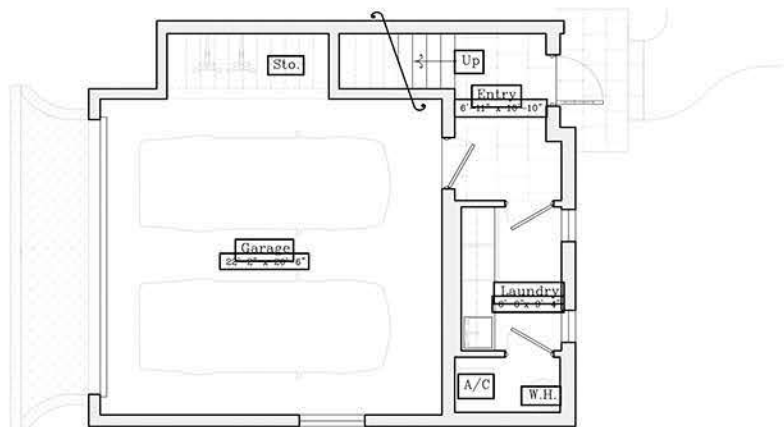
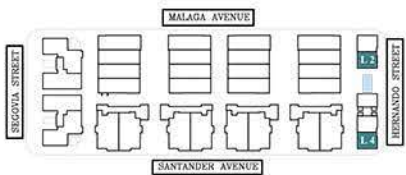




THE VILLAGE
AT CORAL GABLES



LOFTS



L2-L4
First Floor

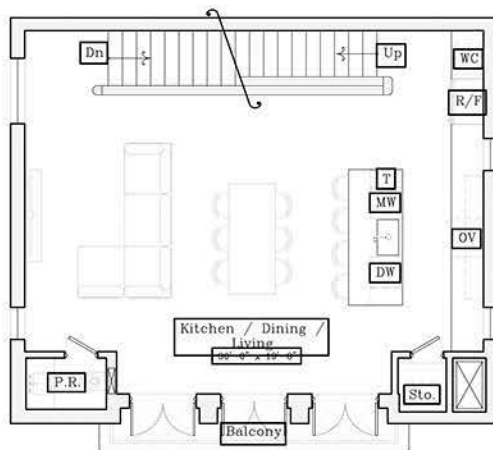
AC INTERIOR AREA	1,881 SF
BALCONY	52 SF
GARAGE	542 SF

TOTAL RESIDENCE	2,475 SF
ADJUSTED AREA	2,152 SF

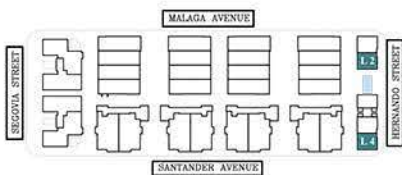




THE VILLAGE
AT CORAL GABLES



LOFTS



L2-L4
Second Floor

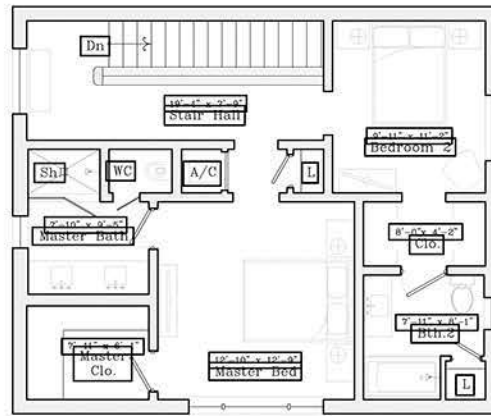
AC INTERIOR AREA	1,881 SF
BALCONY	52 SF
GARAGE	542 SF

TOTAL RESIDENCE	2,475 SF
ADJUSTED AREA	2,152 SF

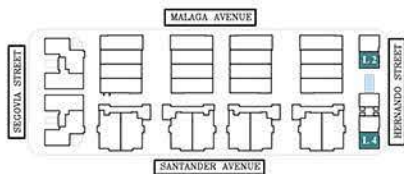




THE VILLAGE
AT CORAL GABLES



LOFTS



L2-L4
Third Floor

AC INTERIOR AREA	1,881 SF
BALCONY	52 SF
GARAGE	542 SF

TOTAL RESIDENCE	2,475 SF
ADJUSTED AREA	2,152 SF

