

Cielo Uno

Floors 48 through 51

3 Bedrooms
3.5 Bathrooms

AC Area
2,920 sf / 271 m²

Outdoor Area
879 sf / 82 m²

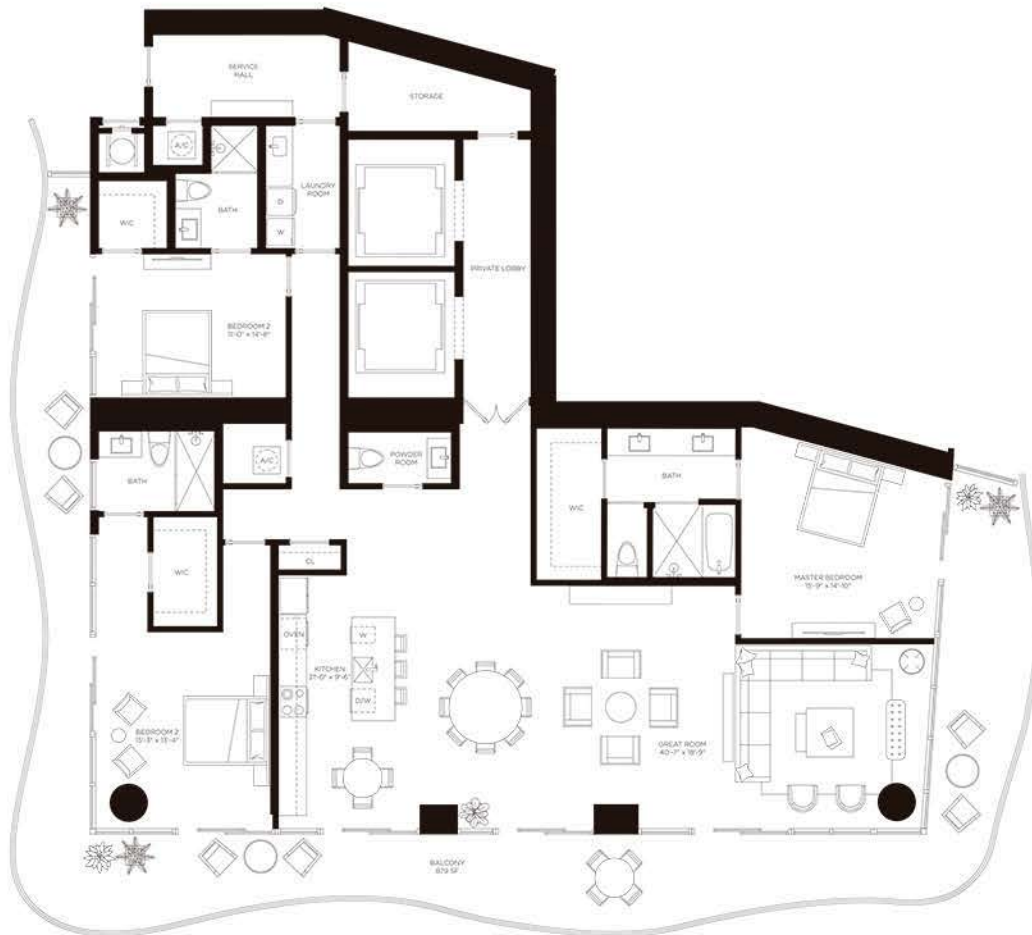
Total Area
3,799 sf / 353 m²

Casa Bella

RESIDENCES

by **B&B ITALIA**

The Art of Italian Living Curated by Piero Lissoni



The dimensions stated for this unit floor plan are approximate because there are various recognized methods for calculating the square footage of a unit. The square footage stated here is calculated from the exterior boundaries of the exterior walls to the centerline of interior demising walls without deductions for closets, curves, or architectural features. This method typically results in quoted dimensions greater than the dimensions that would be determined by using other accepted methods. The definition of "unit" and the calculation method to be relied upon is set forth in the Developer's Prospectus and the method set forth in the Developer's Prospectus may result in a square footage calculation less than the method used here. The balconies depicted are conceptual and the size will vary based on floor level, unit, final permitting and completed construction. The illustrations and images are conceptual and may vary from concept to actual construction. The floor plan, unit layout, locations of windows, doors, closets, plumbing fixtures, mechanical elements, appliances, structural elements, architectural design elements, and the unit's configuration, and details to name may change based on final approved plans, permitting, and completed construction. The furniture plan and the sum of space illustrated are suggested (only) and not intended to quantify or represent any specific use of space. Furnishings, design features, fixtures, and doors illustrated are conceptual and are not included with purchase of a unit. Consult the Developer's Prospectus for information on what is offered with the unit and the calculation of the unit's square footage and dimensions. The Developer, PPH 1400 BISCAYNE, LLC, is a licensee of The Related Group, B&B Italia, and Piero Lissoni, but none of these licensors is the Developer. © 2021 with all rights reserved PPH 1400 BISCAYNE, LLC.